

Dyslexia

Manal Zeineddine

GLOBAL EDUCATION CONSULTANT
PERSONAL & PROFESSIONAL DEVELOPMENT EXPERT
QUALITY MANAGEMENT

Contact:

www.orbitsdevelopment.com

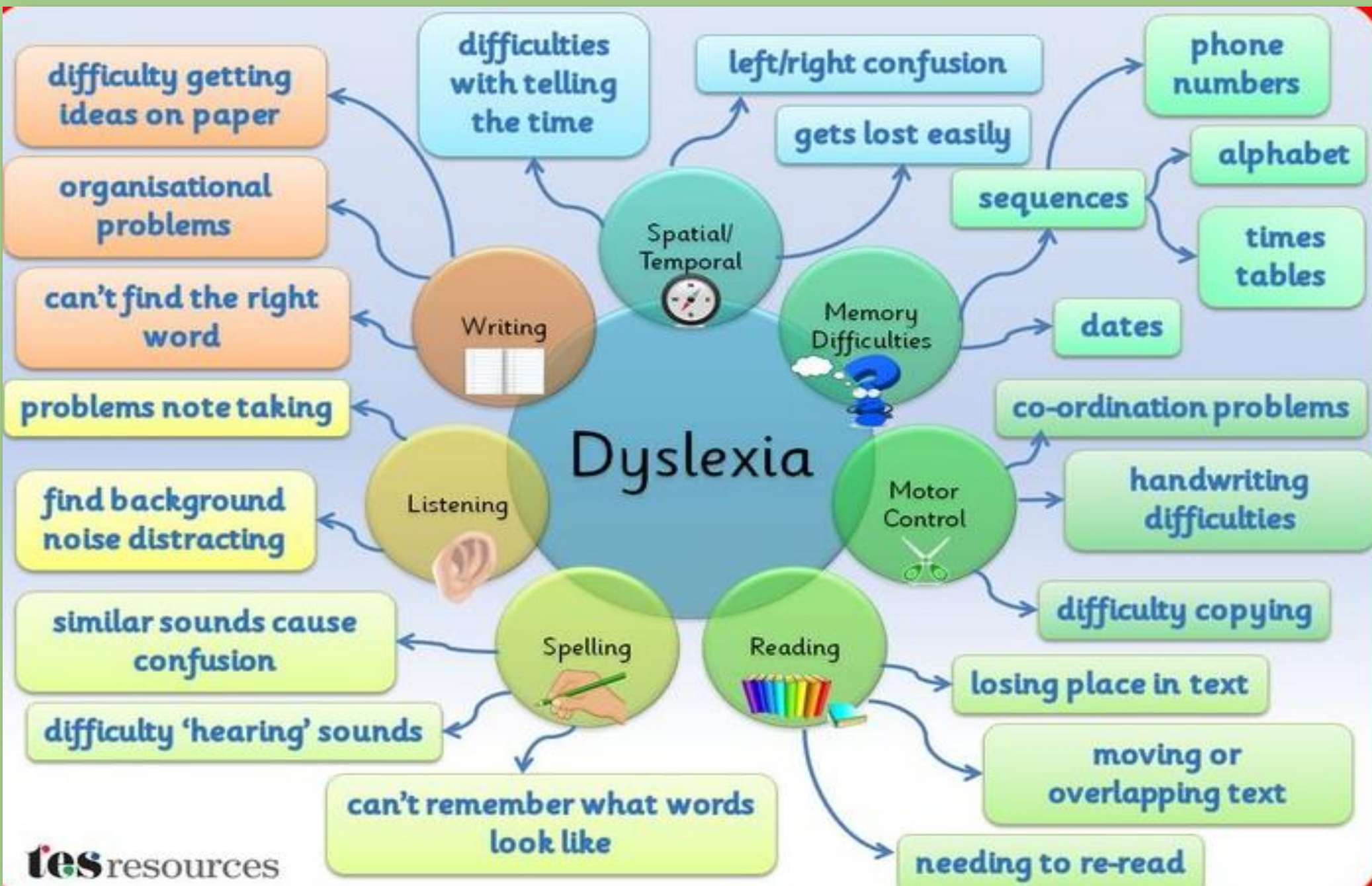
info@orbitsdevelopment.com

966 569 313 803 - 961 76 759 189

What is **Dyslexia** ?

“The trouble was that she (the teacher) gave me too many instructions. By the time I got to where I needed to be I had forgotten all but the last one and that didn’t make any sense on its own. So I hid.” *- Emma age 11*

“I know how to spell museum ten different times. You know only one ! ” *- Liz Miele*



Checking the following GIF can best describe the difficulty that a dyslexic child faces.

<https://tenor.com/view/dyslexia-changing-letters-difficulty-reading-gif-5215100>

<https://gfycat.com/distantdefensiveeyelashpitviper>

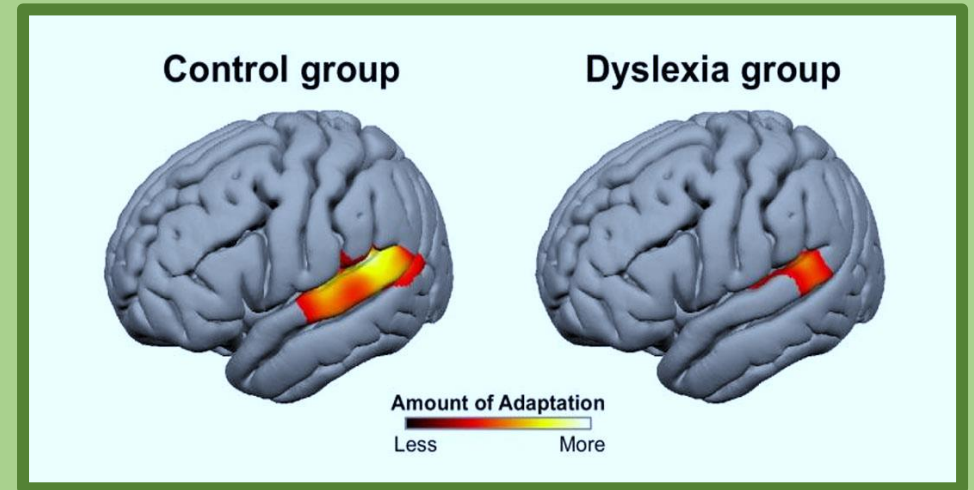
As seen in the above-photos, it is very hard for a dyslexic child to see steady letters and complete words. However, dyslexia is much more than that. It is directly related to issues of attention, working memory, concentration, listening, perception, and general management of tasks and time.

Retention is often difficult for a dyslexic. Asking questions, such as „Did you forget that? „ is not only confusing to the child, but also embarrassing and harmful.

Feeling that he/she is not ready for a popping question by the teacher, a dyslexic tends to avoid being chosen to answer a question. That's why a child may often distract oneself with other tasks, such as going to the toilet, getting things from his locker, moving around trying to find anything that keeps him/her away from responsibility.

A dyslexic child often finds it hard to remember dates, days, time, and general organization and management.

More Noted Disturbances



Due to this lack of proper control, a dyslexic child tends to feel confused managing left and right and different fonts. Sometimes fonts even look blurry.

A child also may have poor motor skills so handwriting is not steady and clear.

Because of the difficulty faced when reading, seeing letters and/or words as missing, there is naturally a difficulty in comprehension as well. They cannot express themselves well because the momentum they read with is always disrupted.



Richard Branson

"I seemed to think in a different way from my classmates. I was very focused on trying to set up a business and create something. My dyslexia guided the way we communicated with customers."

Tommy Hilfiger

"I performed poorly at school. I still have trouble reading. I have to concentrate very hard at going left to right, left to right, otherwise my eye just wanders to the bottom of the page."



Impact on Mental and Emotional Health

Depends on the case of dyslexia.

Daydreaming: which is mistaken to be negative, but in fact, it is an intuitive approach to solving problems.

Fear of the expected and the unexpected ...consequently anxiety

Strengths

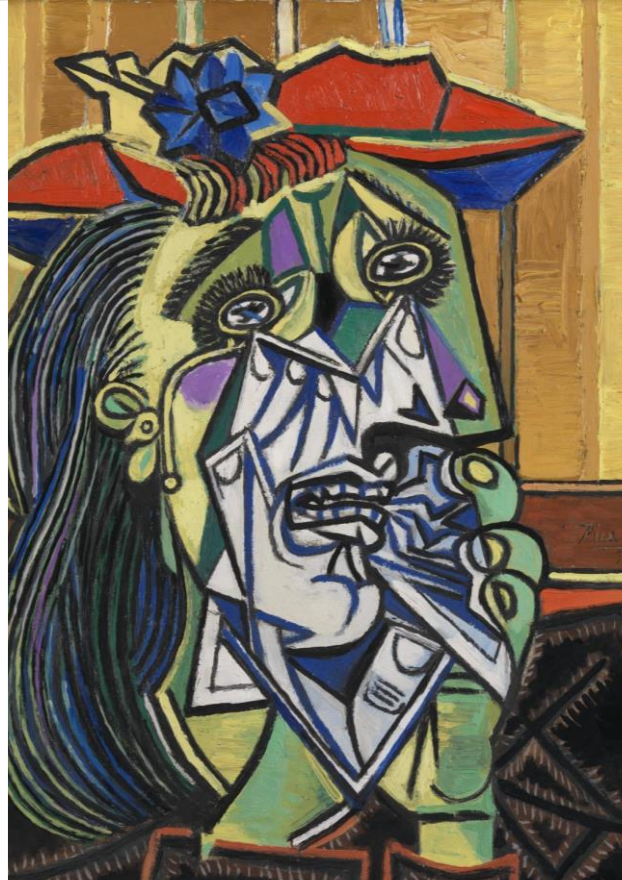
Visual learners: Dyslexic tend to remember pictures very fast and with extreme details.

Proved to be very creative in their field.

Proved to be better at visual processing.

Proved to be better designers of 3D. (architects)

Proved to solve problems in an unconventional manner (getting a sudden insight)



Pablo Picasso :

Empowered by his vision of things, Picasso painted his paintings in such an imaginary manner, which is considered by many as linked to his inability to see words properly.

From the child "having difficulty differentiating the orientation of letters" as described by his teachers to the world-famous artist as described by the entire world!

Strategies and Steps to Action

- ✓ Test-it strategy : You cannot confirm dyslexia without proper testing (Specialized Dyslexia Assessment)
- ✓ Early Interventions to assist the child in letters, sounds, combining letters into words, understanding texts
- ✓ Involving multisensory teaching (involving all senses) to make learning more concrete and consequently more effective
- ✓ Assisting the child to write down reminders related to days, dates, times, etc...
- ✓ No-procrastinate approach : Do what has to be done immediately so you keep no room for anxiety and fear of not meeting goals
- ✓ Training courses to teachers and parents/guardians
- ✓ Technology resources that can enhance easy learning and management
- ✓ Special Educational Needs (SEN) Support as per request or referrals

The Twinkl logo, featuring the word "twinkl" in a blue, lowercase, sans-serif font with a small red star above the letter 'i'. The logo is set against a white, cloud-like background.

Dyslexia and me: Vic's Story
Monday 7 October 2019

<https://www.bdadyslexia.org.uk/news/dyslexia-and-me-vics-story>

Dyslexia and me

**A Day in the Life
of a Child With
Dyslexia**
By The Understood
Team

<https://www.understood.org/en/learning-attention-issues/child-learning-disabilities/dyslexia/a-day-in-the-life-of-a-teen-with-dyslexia>

Manal Zeineddine

GLOBAL EDUCATION CONSULTANT
PERSONAL & PROFESSIONAL DEVELOPMENT EXPERT
QUALITY MANAGEMENT

Contact:

www.orbitsdevelopment.com

info@orbitsdevelopment.com

966 569 313 803 - 961 76 759 189