



**Manal Zeineddine**

**O.R.B.I.T.S. DEVELOPMENT CODE**

[www.orbitsdevelopment.com](http://www.orbitsdevelopment.com)

**“EBD”**

# EMOTIONAL OR BEHAVIORAL DISORDERS

**PROTOSTAR - 2 -**

*Great things are most of the times born from small, insignificant, even chaotic things. Just like a protostar, newly-born star that stems out of dust clouds, our great knowledge starts from small, even chaotic search into matters, until we start to align, organize, and create a massive, shining body of knowledge.*

*Keep your core hot enough and pace steady enough to develop into fully-fledged star of knowledge and expertise!*

# HOW TO IDENTIFY “EBD”?

- It is an emotional disturbance that is deviant from age-appropriate norms of behaviors and responses.
- Disturbance can be noted in academics, behavior, work habits, and socialization.
- Disturbance lasts for a long time .

**EBD** cannot be guaranteed to be solved by many types of intervention.  
[Forness and Knitzer 1992]

Fearfulness

Hypersensitivity

Anxiety

Embarrassment

Depression

Fearfulness

Anger

Defiance

Noticed in some  
EBD children



Noticed in some **EBD** children



Most  
Common  
**EBD**

- ADHD (Attention Deficit Hyperactivity disorder)
- ODD (Optional Defiant Disorder)
- CD (Conduct Disorder)
- SCD Social (pragmatic) Communication Disorder

3  
Techniques  
to Use in  
Class

- Description of directions and rules
- Assertive approach and attitude
- Supportive Communication

# HOW TO IDENTIFY INTENSITY OF **EBD** ?

Intensity depends on the degree of negative feelings and behaviors displayed by the child. Consistent, nonstop tantrums that are usually harmful to the child and the surrounding are considered high-level (**EBD**).

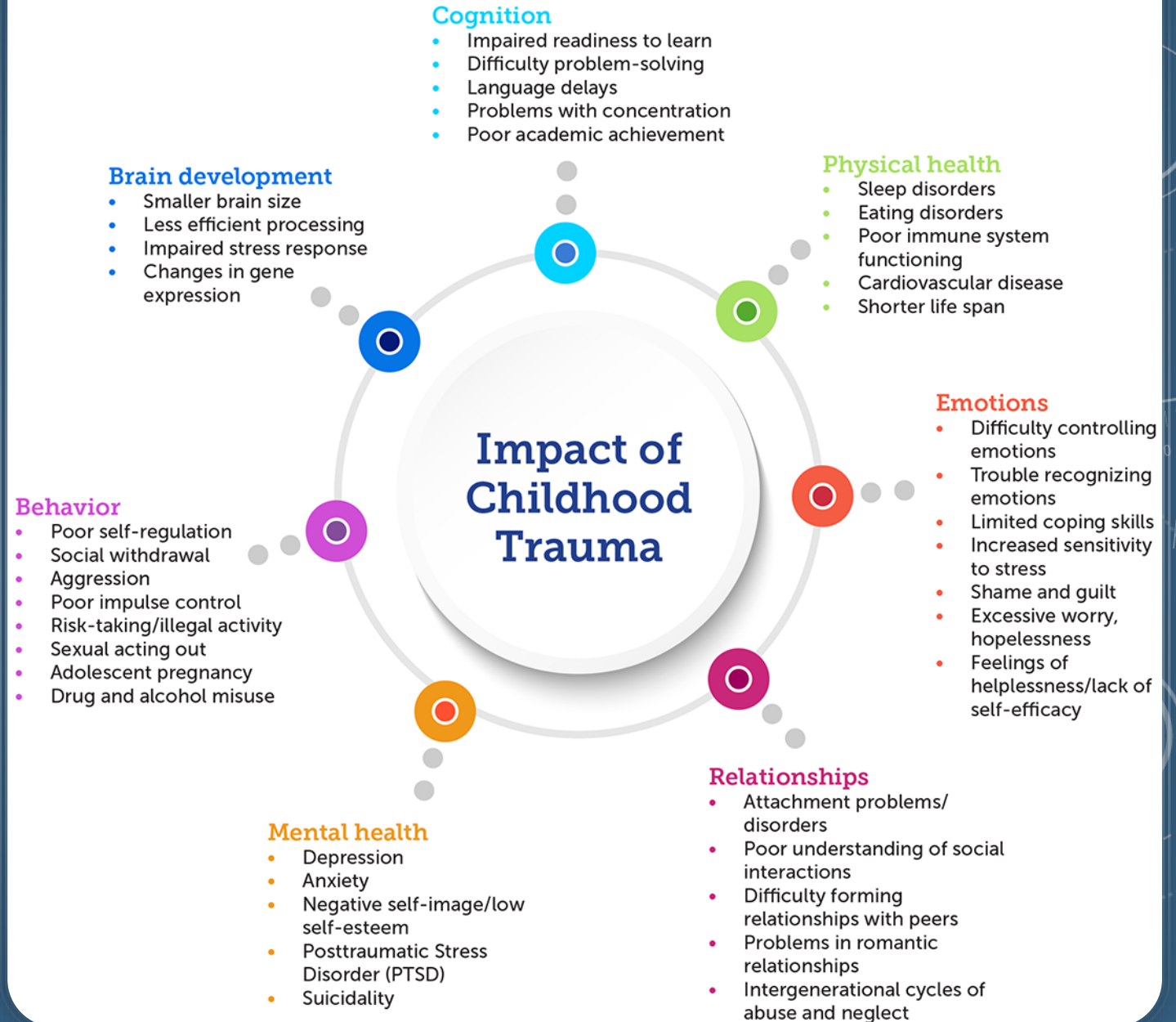
In this case child must be referred to a counselor by filling and planning Individualized Education Program (IEP), which is a plan that serves to carefully diagnose and suggest action steps, and detailed following-up steps. (IEP) must be conducted by a committee or team.



# COMMON CAUSES/FACTORS

- Father/ Mother Relationship Problems
- Birth Issues (Perinatal)
- Parent-child Relationship Problems
- Tobacco, Alcohol Consumption
- Socio-economic Factors
- General Cases of Abuse

## Impact of Childhood Trauma

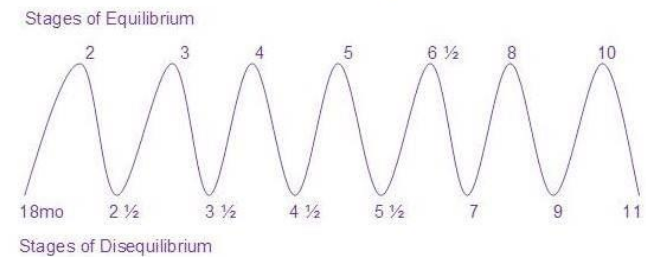


# SOME SCREENING TOOLS

- Behavioral and Emotional Screening System (BESS; ages 3-18 years)
- Behavior Assessment System for Children
- Pediatric Symptom Checklist (PSC)
- Ages and Stages Questionnaire-Social Emotional (ASQ-SE, Ages 0 to 5 years)
- Achenbach System of Empirically Based Assessment (ASEBA), for children aged 1.5 years through adulthood.

## Stages of Development

All children cycle in and out of stages of equilibrium and disequilibrium.







*Manal Zeineddine*

GLOBAL EDUCATION INFLUENCE

PROFESSIONAL DEVELOPMENT

QUALITY CONSULTANCY

**Contact:**

[www.orbitsdevelopment.com](http://www.orbitsdevelopment.com)

[info@orbitsdevelopment.com](mailto:info@orbitsdevelopment.com)

[manal.zd@gmail.com](mailto:manal.zd@gmail.com)

966 569 313 803 - 961 76 759 189